

minipresso

GR

PORTABLE
ESPRESSO MACHINE
Compatible Ground Coffee only



Designed by



WACACO

Dear Customer,

Thank you for having chosen our product and for your confidence in our company. We have devoted all our knowledge, our creativity and our care into the Minipresso so that it has been designed to meet and even exceed your expectations. We are confident Minipresso will serve you well for many years.

Minipresso give you freedom to savour your favorite espresso on the go, at home or at work. Although it is compact, light and portable, it provides a high extraction quality, offering the ultimate espresso experience wherever you are and at any time of the day.

Share these moments with friends and enjoy every espresso!

SN:

INTENDED USE

The Minipresso is intended to a personal use. It is not suitable for commercial, professional, collective or industrial use. Use of the Minipresso in any manner other than as directed herein could cause harm to persons and void the warranty. Wacaco Company Limited will not be responsible for injury or damage resulting from improper use of the Minipresso.

WARNING

Carefully read the following instructions before using your Minipresso machine. In this way you will avoid the risk of personal injury and damage to the appliance.

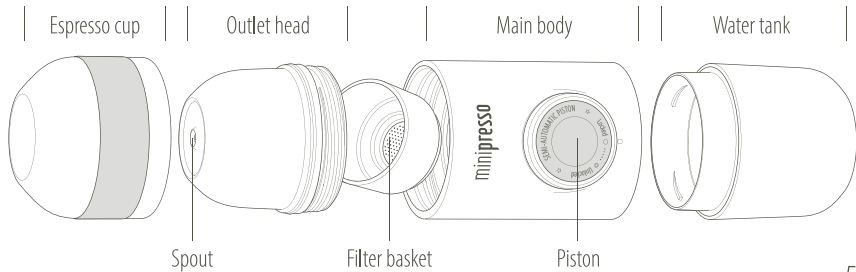
- Do not use the Minipresso for other than its intended use.
- After removing the packaging, make sure that the Minipresso is intact.
- The packaging elements (plastic bags, etc.) must not be left within reach of children as they are potential sources of danger.



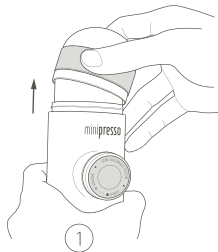
- Do not allow the Minipresso to be used by children or uninstructed persons. Children must be kept under supervision to prevent them from playing with the Minipresso.
- Do not action the piston if the water tank and the outlet head are not in position.
- Never consume liquid directly from the Minipresso as contents may be hot.
- Do not put Minipresso on a gas or electric hot plate, in an oven, a microwave or a dishwasher.
- Only use clean water in the Minipresso. Do not use any other fluid.
- Never heat up the water directly in the water tank. Water must be heated by an external heating source such as a kettle and then poured into the water tank.
- Clean the Minipresso carefully and regularly.
- Do not use any accessories not recommended by Wacaco Company Limited, as this may cause injury.
- Do not use the Minipresso if it is showing any sign of breakdown or malfunction.
- Do not attempt to dismantle or repair. Contact Wacaco Company Limited in case of malfunction.
- If you burn yourself, immediately pour cold water on burnt area and call a doctor if necessary.



DESCRIPTION



INSTRUCTIONS



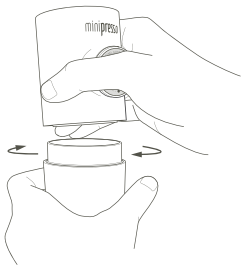
Unclips the cup.



Unscrew the outlet head.

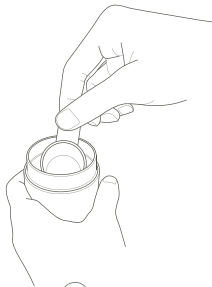


Remove the filter basket.



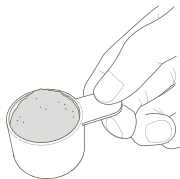
4

Unscrew the water tank.



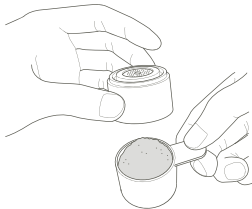
5

Remove the scoop
from the water tank.



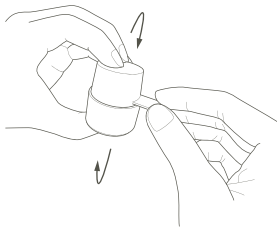
6

Fill the scoop
with
ground coffee.



7

Position the filter basket on the top of the scoop.



8

Reverse to transfer all the powder into the filter basket.

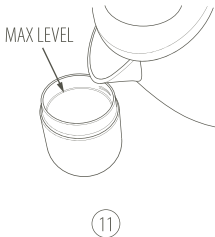


9

Put back the filter basket on the top of of the main body. Clean up if any coffee remain on the edge of the filter basket. 8



10
Screw tightly the outlet head into the main body until the stop.



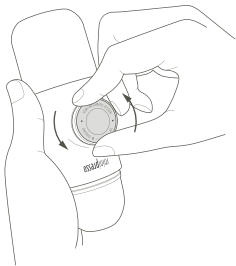
11
Add boiling water into the water tank. Stop pouring before reaching the step.

⚠ Place water tank on level and stable surface in order to fill it.



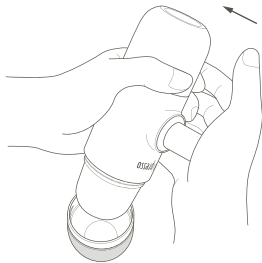
12
Screw tightly the main body onto the water tank until the stop.

⚠ Avoid burning yourself. Handle with care.



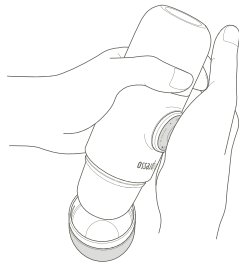
13

Unlock the piston from its travel position by rotating it to the left.



14

Bring the Minipresso above the cup and start pumping.



The first 6 strokes will fill the filter basket of water. Continue pumping until no more coffee come out.

10

NOTE

For best results, we highly suggest you to:

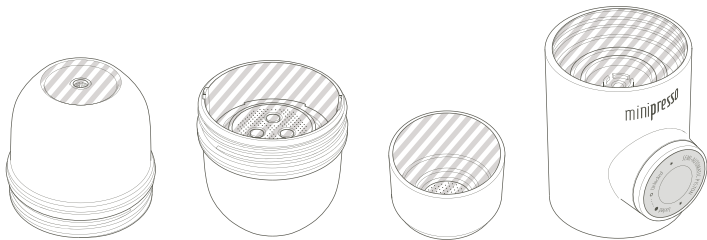
- Use fresh roasted coffee beans and filtered water.
- Grind coffee beans just prior to prepare your espresso shot.
- Gently tamp the ground coffee into the filter basket with the back of the scoop.
- Preheat all Minipresso parts as well as the cup by running a cycle with only hot water.

WARNING

- Avoid burning yourself, handle hot water with care.
- Do not apply higher than usual force on the piston if this one is stuck. High pressure may cause damage.
- Do not fill to the rim the filter basket with tamped ground coffee.
- Only use one scoop of ground coffee (7 grams) to fill the filter basket.



CLEANING

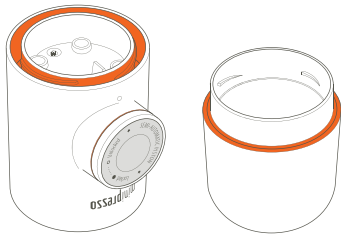


Clean the hatched areas under running water to remove **all** remain coffee.
For **all** others areas, we highly recommend to **only** use a humid soft cloth when cleaning.

WARNING



- Do not put water into the orange area.
- Do not put any Minipresso parts into dishwasher.



SAFETY APPROVAL

Minipresso complies with major safety approvals regarding food contact materials.



ENVIRONMENTAL PROTECTION

Packaging materials and appliance contain recyclable materials.



DISPOSAL

Minipresso has been manufactured using high quality materials that can be reused or recycled.

Dispose of the appliance in a suitable waste collection centre.



WARRANTY

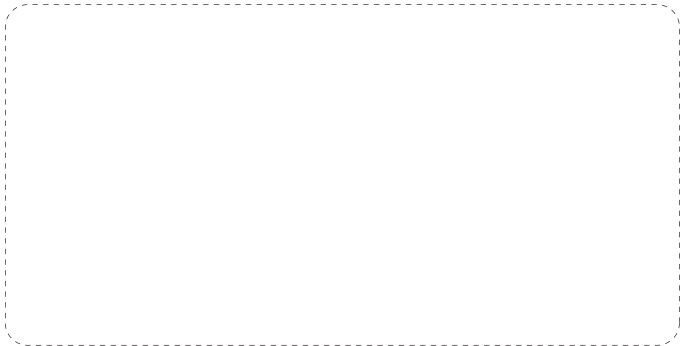
Wacaco Company Limited warrants the Minipresso against defects that are due to faulty materials or workmanship for a period of 12 months from the date of purchase. This warranty is not transferable and does not entitle to compensation in cash. Wacaco Company Limited disclaims all responsibility for incidental or consequential damages caused by use of this appliance. This warranty does not cover:

- Damage resulting from improper use, abuse, neglect, commercial use or any other use of this appliance not found in this printed manual.
- The replacement of the o-rings, filter basket and scoop.
- Damage of an aesthetic nature, damage due to corrosion or gradual deterioration.

Any disassembly or repairs done by unauthorized persons will void the warranty.

For any repair or exchange, the cost of return is at your expense.

If your Minipresso fails within one year, please contact your local distributor or support@wacaco.com.



WACACO
www.wacaco.com

